



# AUGUSTA EVO

THE WITTUR RESIDENTIAL DOOR



**safety** *in* **motion**<sup>™</sup>

AUGUSTA EVO is the affordable Wittur quality door for the residential market

# Augusta EVO



## 1 Easy and fast installation

- ▶ Reduced depth and height dimensions
- ▶ 3D adjustment possibilities to overcome offset shaft and irregular field conditions
- ▶ Fast assembly time



## 2 High comfort and good performance

- ▶ Low vibrations due to assembly design
- ▶ Same rollers as HYDRA series guarantee low operating noise
- ▶ Integrated reclosing device
- ▶ Proven reliability and durability of key components



## 3 Easy maintenance

- ▶ Easy access for maintenance parts
- ▶ Same components for central and side opening version
- ▶ Reduced stock and spare part management



## 4 Modular recyclable packaging

- ▶ Cardboard modular packaging
- ▶ All packaging materials are recyclable



## 5 Certifications

- ▶ AUGUSTA EVO is designed to comply with the Lift Directive and the EN 81-20/50 norms, and it is available with fire-rated EN 81-58 E 120, EI 120, EI 60 and EW 60 certifications, Russia GOST E30 and EI 60, BS 476.

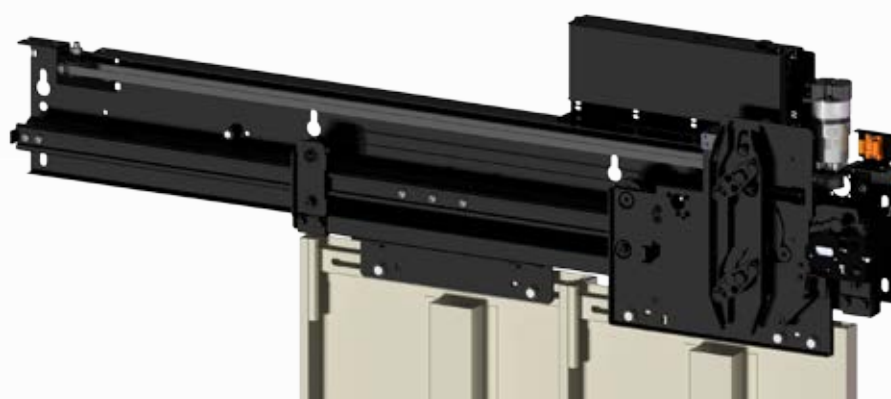


## 6 Finishes

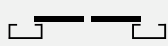

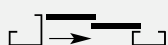

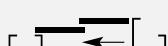

- ▶ Prime finish powder painted RAL 7032 (embossed)
- ▶ Powder painted RAL (embossed)
- ▶ Stainless steel
- ▶ Skinplate

## Car door operator

- ▶ ECO+ door drive (vertical and horizontal position): low energy consumption and low noise
- ▶ EN 81-20/50 compliant by design (car door lock always provided)
- ▶ Same wear and tear components and spare parts as the landing door



## Production range

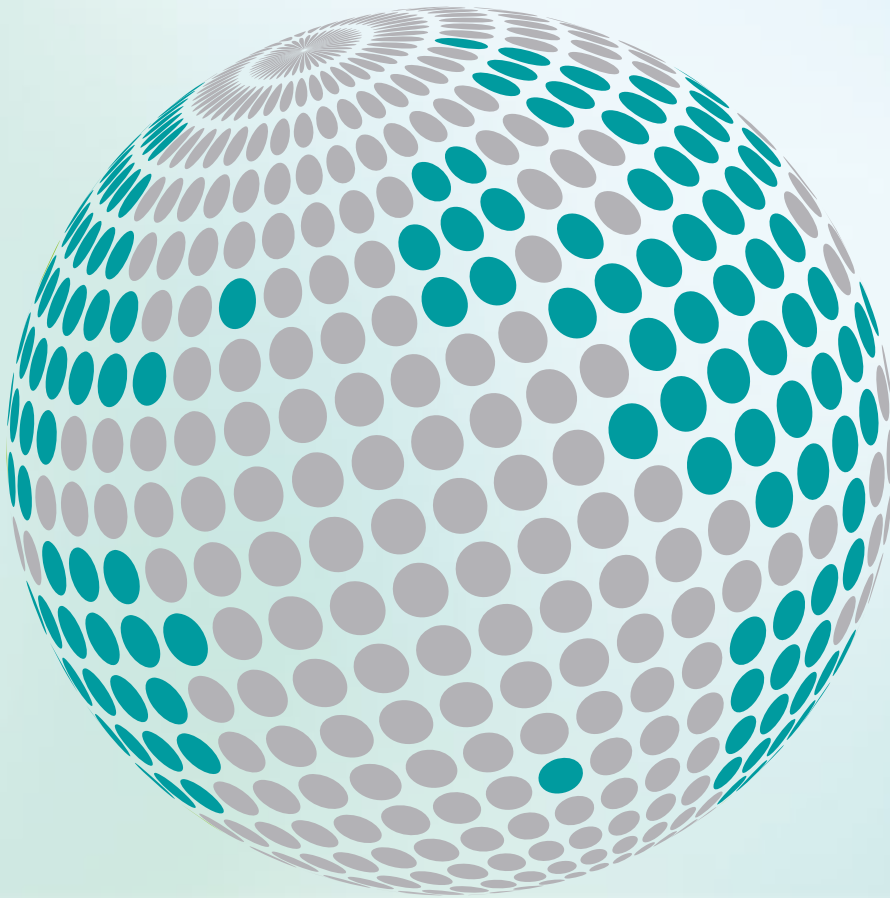
Sill width (mm)	Landing doors		Car doors		Clear Opening (mm)*	Clear Height (mm)*
	Type	Illustration	Type	Illustration		
40	01/C		02/C		700	2000
80	11/R		12/R		800	2100
			1000			
80	11/L		12/L		1100	2200

\* Intermediate C.O. and C.H. are available in steps of 50 mm

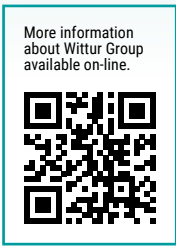


WITTUR

**YOUR GLOBAL PARTNER FOR COMPONENTS,  
MODULES AND SYSTEMS IN THE ELEVATOR INDUSTRY**



[www.wittur.com](http://www.wittur.com)



More information  
about WITTUR Group  
available on-line.

**SELCOM**<sup>®</sup>  
a WITTUR brand

**Liftmaterial**  
a WITTUR brand

**sematic**<sup>®</sup>  
a WITTUR brand